

**Senai Investment CC**

**(BID): EPL No. 9989**



**Physical Address:** Block B, 5<sup>th</sup> Floor, Maerua Mall, Windhoek

**Postal Address:** PO Box 997154 Maerua Mall, Windhoek

**Telephone:** +264 (0) 61 259 530

**Fax2email:** +264 (0) 886 560 836

**Email:** [info@edsnamibia.com](mailto:info@edsnamibia.com)

**Web:** [www.edsnamibia.com](http://www.edsnamibia.com)

## **BACKGROUND INFORMATION DOCUMENT (BID)**

**Environmental and Social Impact Assessment (ESIA) for the Proposed  
Prospecting and Exploration activities on Exclusive Prospecting  
Licence (EPL) No. 9989 located near Rehoboth, Hardap Region**

**Proponent: Senai Investment CC**

**Environmental Consultant: Excel Dynamic Solutions (Pty) Ltd**

**March 2025**

## 1 INTRODUCTION

Senai Investment CC (The Proponent) applied for an Exclusive Prospecting Licence (EPL) No.9989 from the Ministry of Mines and Energy (MME) on 03 April 2024. The EPL covers a surface area of 18914.0208 hectares (ha) and is located near Rehoboth, Hardap Region (**Figure 1**). The EPL overlies Farm Vooruitsig No. 992, Farm Sudan No. 708, Farm Auchab No. 313, Farm Vryheid No. 312, Farm Soverby No. 311, Farm Tsebris No. 48, Farm Arbeidsgenot No. 894, Farm Rehoboth Townlands No. 302, Farm Spitskop No. 314, Remainder of Farm Sandputz No. 50, Portion 1 of Farm Sandputz No. 50 and Farm Twee Rivier No. 957 (**Figure 2**). The EPL is accessible via the B1 road and the C24, which connects to the dirt road (track road) leading to the EPL area (refer to Figure 1). The commencement of exploration activities on the EPL requires an Environmental Clearance Certificate (ECC). The target commodities for this project are **Base & Rare Metals, Dimension Stone, Industrial Minerals, Precious Metals, Precious Stones, and Semi-Precious Stones**.

Exploration and all mining-related activities are among the listed activities that may not be undertaken without an ECC under the Environmental Management Act (EMA) (2007) and its 2012 Environmental Impact Assessment (EIA) Regulations. The relevant listed activities as per EIA regulations are:

- *3.1 The construction of facilities for any process or activities which requires a license, right of other forms of authorization, and the renewal of a license, right or other forms of authorization, in terms of the Minerals (Prospecting and Mining Act, 1992).*
- *3.2 other forms of mining or extraction of any natural resources whether regulated by law or not.*
- *3.3 Resource extraction, manipulation, conservation, and related activities.*

The Proponent is, therefore, required to obtain an ECC for the approval of the EPL before the commencement of works on the EPL. To fulfill the legal requirements, the Proponent has appointed Excel Dynamic Solutions (Pty) Ltd (Environmental Consultant), to conduct the required Environmental and Social Impact Assessment (ESIA) process and submit the ECC application to the Department of Environmental Affairs and Forestry (DEAF) at the Ministry of Environment, Forestry & Tourism (MEFT).

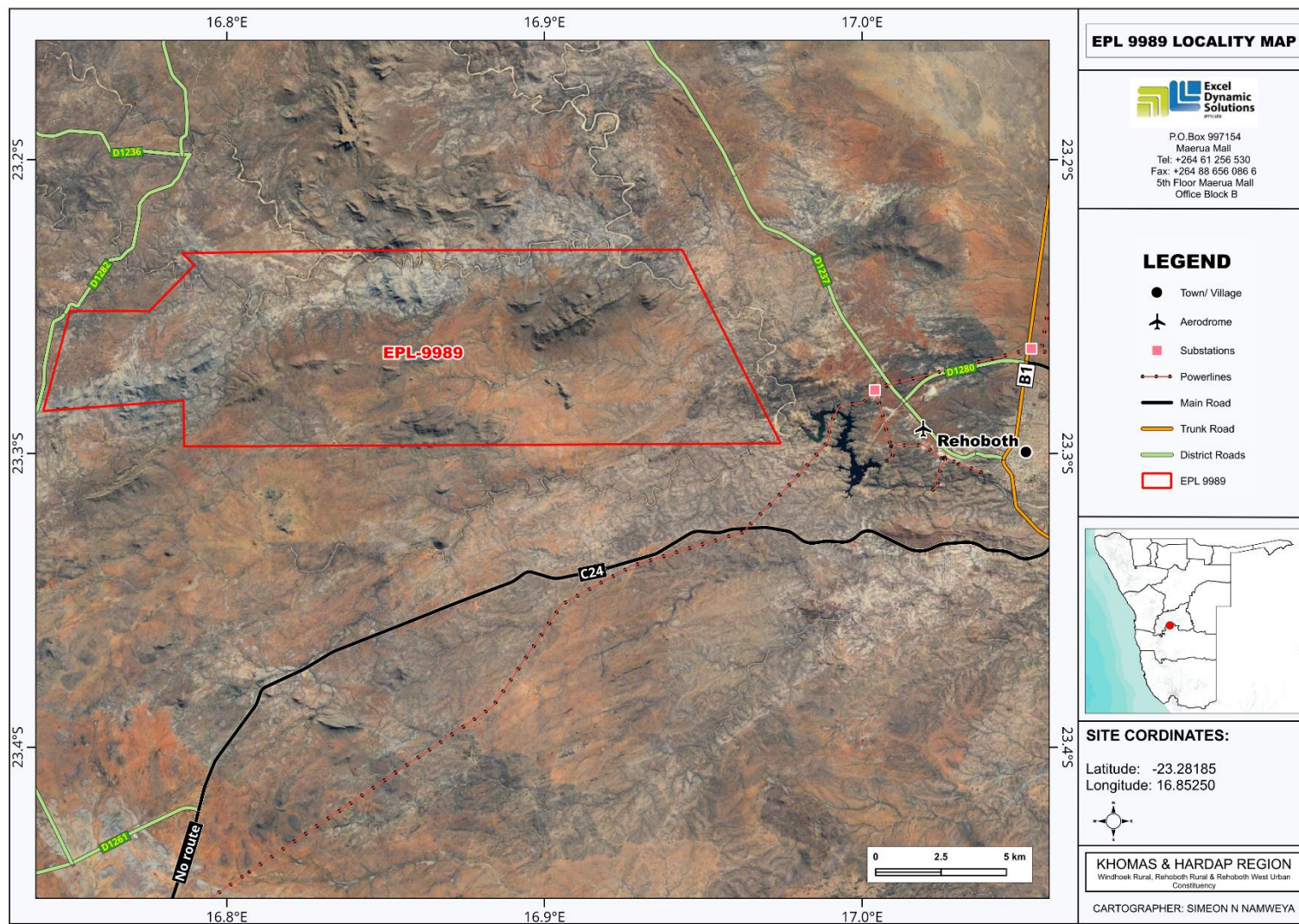


Figure 1: Locality map of EPL No. 9989, Hardap Region, Namibia



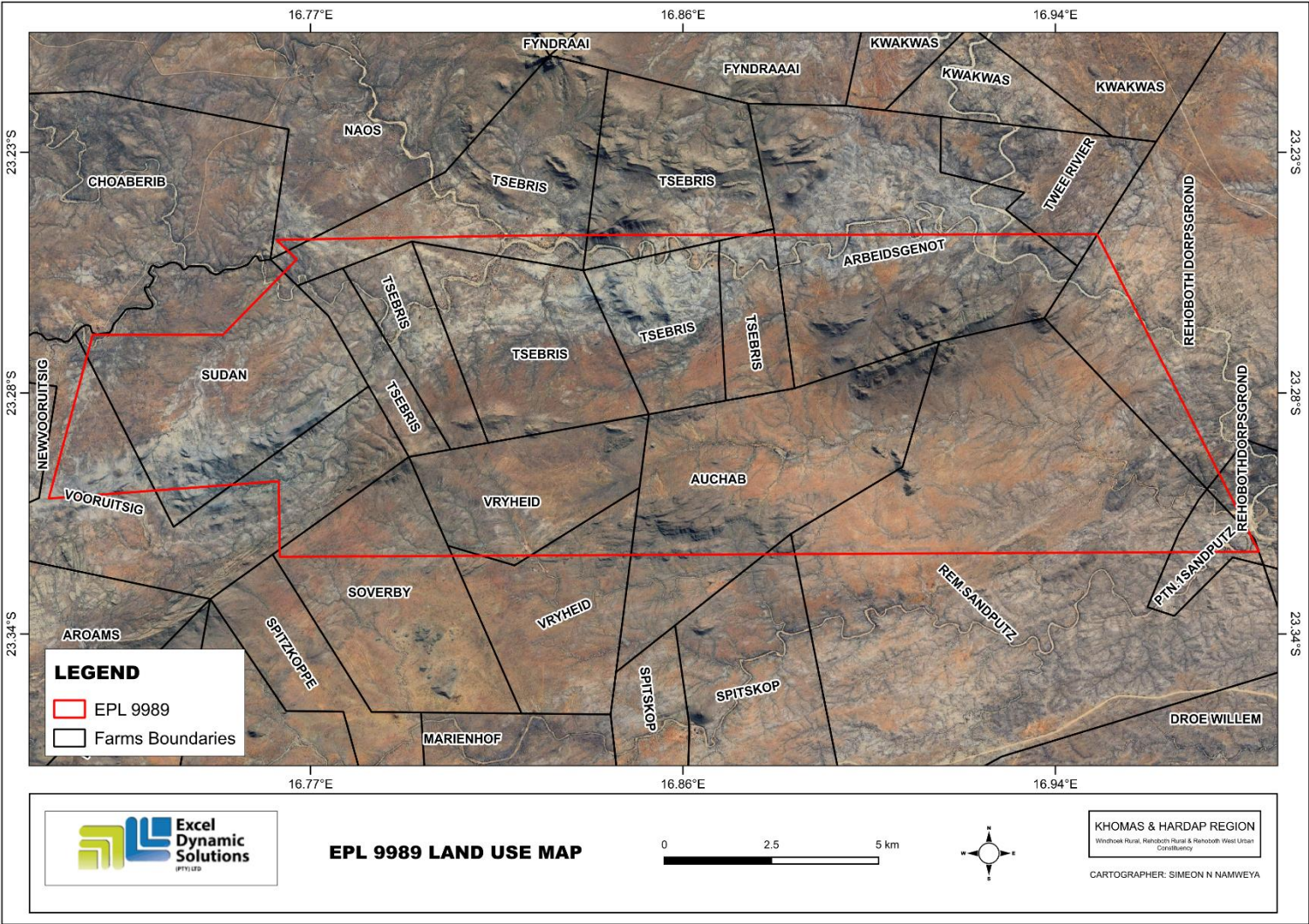


Figure 2: The land use around the project area

## **2. PURPOSE OF THIS DOCUMENT**

It should be noted that the Background Information Document (BID) is a non-technical document of the ESIA (not an ESIA Report). The BID aims to briefly introduce the proposed project and related activities to Interested and Affected Parties (I&APs), and provide them with an opportunity to raise issues, and concerns and submit comments about the proposed project.

The planned exploration activities will only commence once the Proponent has been issued with an ECC and obtained all required permits.

## **3 PROJECT DESCRIPTION**

The proposed activities entail prospecting and detailed exploration activities to delineate the mineral deposits. This is to determine whether the deposit for the target commodities is economically feasible (to advance to the resources development and mining phase).

Prospecting and exploration of minerals are the first components of any potential mining project. This is done to acquire the necessary data required for further decision-making and investment options.

Exploration activities are anticipated to last for about three years or sometimes longer (depending on the various factors such as turnaround between exploration data analysis and availability of funds between project phases, etc.).

### **3.1 Project Activities**

The proposed prospecting and exploration activities (methods) are divided into the following categories:

Phase 1: Non-invasive techniques (prospecting) – mapping/geochemical and radiometric surveys.

Phase 2: Invasive techniques (detailed exploration) – soil sampling, trenching, and drilling.

Once the target areas have been selected and verified under the prospecting phase, detailed exploration works will follow.

### 3.2 Human Resources, Services, and infrastructure

The following services and infrastructure as outlined below will be required for the project activities:

**Human Resources:** Around 5-10 people will be employed for the project, and will be accommodated in the nearest town or tented camps if necessary.

**Water Supply:** Around 2500 liters of water per month will be required for the activities.

**Fuel Supply (machinery and equipment):** Diesel will be used for machinery and equipment, and power generator.

**Accessibility:** The EPL is accessible via the B1 road and the C24, which connects to the dirt road (track road) leading to the EPL area - refer to figure 1.

### 3.3. Waste Management

**Sewage:** Mobile chemical ablution facilities will be provided on-site. Sewage waste will be disposed of appropriately as per instructions of the facility manufacturer.

**Solid waste:** Sufficient waste bins (containers) will be made available at exploration sites and campsites for waste storage and later disposal at the nearest approved waste facility.

**Hazardous waste:** The waste fuel/oils will be carefully stored in a standardized container for disposal at an approved hazardous waste management facility in the nearest Town.

**Health and Safety:** Adequate and appropriate Personal Protective Equipment (PPE) will be provided to project personnel. A minimum of two first aid kits will be readily available onsite.

**Potential Accidental Fire Outbreaks:** Fire extinguishers will be readily available in vehicles, at the sites, and campsites.

**Project Equipment, Material, Machinery, and Vehicles:** 4X4 vehicles, a drilling supporting truck, an excavator/front-end loader, a dozer, an air compressor, drilling fluids stored in manufacturers approved containers, and a generator for power supply will be required for the proposed project.

Upon completion of exploration works, the disturbed sites will be rehabilitated to their pre-exploration phase as far as practically possible. This will include backfilling of exploration trenches, and boreholes, leveling of stockpiled topsoil, and cleaning of site areas.

#### **4 ENVIRONMENTAL ASSESSMENT**

This EA process is conducted in accordance with the provisions of the EMA (Act No 7 of 2007) and its 2012 EIA Regulations. The primary objective of the EA is to identify potential negative impacts associated with the project and assess them. Practical and effective mitigation measures will be recommended for implementation.

The main objectives of this EA are to:

- Identify potential impacts associated with the proposed Activity.
- Inform I&APs and relevant authorities about the project and provide them with an opportunity to participate during the EA process.
- Assess the significance of issues and concerns raised.
- Compile a report addressing all identified issues and potential impacts.
- Compile a Draft Environmental Management Plan (EMP) which includes impacts management and mitigation measures.

##### **5.1 Pre-Identified Potential Impacts**

The following potential impacts have been identified:

###### **5.1.1 Positive:**

- Socio-economic development: employment creation and skills transfer.
- Investment opportunities or infrastructure-related development benefits.
- Produce a trained workforce and small businesses in the area.
- Boosting local economic and regional economic development.
- Increased support for local businesses through the procurement of locally available goods and services.

###### **5.1.2 Negative Impacts:**

- Disturbance of existing commercial grazing areas,
- Physical land/soil disturbance and prone to erosion
- Impact on fauna and flora (habitat disturbance and poaching)
- Water resources (over-abstraction of water) and soil pollution
- Air quality issue owing to dust generation

- Occupational and community health and safety risks/hazards
- Vehicular traffic safety and services infrastructure (local roads)
- Vibrations and noise associated with drilling activities
- Environmental pollution from poor waste management
- Archaeological or cultural heritage impact
- Potential social nuisance and land use conflicts

Other potential impacts may be identified as the EA process progresses. All impacts and public concerns and comments will be incorporated and addressed in the Environmental Report and a draft EMP.

## 5.2 Public Consultation Registration

Public consultation is an important part of the EA process. During the consultation process, I&APs are allowed to raise any issues or concerns pertaining to the project activities.

To comment or receive further information on the project, **please register with Excel Dynamic Solutions (Pty) Ltd** (contact details herein) as an Interested and Affected Party (I&AP).

Furthermore, the Consultation Meeting details will be communicated with registered I&APs.

For comments and/or further information requests, please contact EDS Consultant on the details provided below:

**Contact:****Ms. Alina Endjala****Environmental Assessment Practitioner****Tel: +264(0)61 259 530****Email: [public@edsnamibia.com](mailto:public@edsnamibia.com)**